



Leading the Industry in
Solar Microinverter Technology



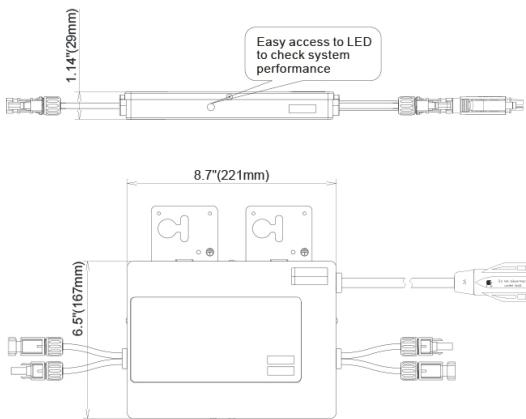
YC500i

with EnergyMax™

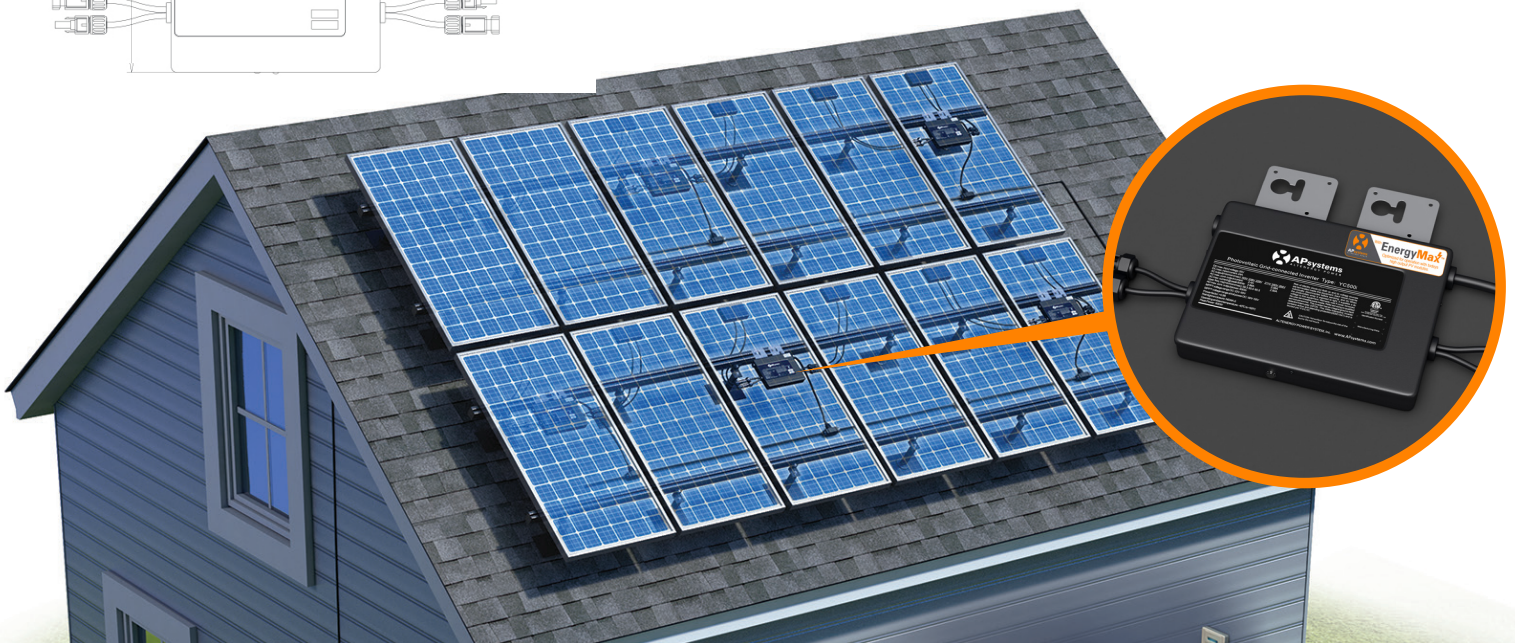
High output microinverter with
integrated ground

- Single unit connects two solar modules
- Integrated ground
- Peak output power 548W
- Individual MPPT for each module
- PLC communication & free monitoring
- Ideal for today's high output PV modules

DIMENSIONS



The APsystems YC500i with EnergyMax™ is a grid-tied microinverter with intelligent networking and monitoring systems to ensure maximum efficiency. Highly dependable and cost effective, the YC500i with EnergyMax™ is optimized to accommodate today's high output PV modules effectively with up to 548W output and dual MPPT. An integrated ground allows for rapid installation for installers who prefer trunk cable architecture. Half the inverters and half the installation time means real cost savings for residential and commercial customers.



APsystems YC500i EnergyMax™ Microinverter Datasheet

INPUT DATA (DC)

| | |
|-------------------------|---------|
| MPPT Voltage Range | 22-45V |
| Operation Voltage Range | 16V-52V |
| Maximum Input Voltage | 55V |
| Startup Voltage | 22V |
| Maximum Input Current | 12A X 2 |

OUTPUT DATA (AC)

| | | |
|---------------------------------|-------------------|-------------------|
| Nominal Output Voltage | 208V* | 240V* |
| Peak Output Power | 548W | 548W |
| Maximum Continuous Output Power | 500W | 500W |
| Nominal Output Current | 2.4A | 2.08A |
| Default Output Voltage Range | 183V-229V** | 211V-264V** |
| Peak Output Current | 2.63A | 2.28A |
| Nominal Output Frequency | 60Hz | |
| Default Output Frequency Range | 59.3Hz-60.5Hz** | |
| Maximum Units Per Branch | 6 for 20A Breaker | 7 for 20A Breaker |

EFFICIENCY

| | |
|-------------------------|-------|
| Peak Efficiency | 95.5% |
| CEC Weighted Efficiency | 95% |
| Nominal MPPT Efficiency | 99.5% |
| Night Power Consumption | 120mW |

MECHANICAL DATA

| | |
|-------------------------------------|----------------------------------|
| Operating Ambient Temperature Range | -40°F to +149°F (-40°C to +65°C) |
| Storage Temperature Range | -40°F to +185°F (-40°C to +85°C) |
| Dimensions (WxHxD) inches | 8.75" x 6.5" x 1.1" |
| Dimensions (WxHxD) mm | 221mm x 167mm x 29mm |
| Weight | 5.5 lbs (2.5kg) |
| AC Bus (trunk cable) | 12AWG |
| Enclosure Rating | NEMA 6 |
| Cooling | Natural Convection - No Fans |

FEATURES & COMPLIANCE

| | |
|---------------------------------------|-----------------------------------|
| Communication (Inverter to ECU) | Power line Communication |
| Emissions & Immunity (EMC) Compliance | FCC PART 15, ANSI C63.4, ICES-003 |
| Safety Class Compliance | UL1741 CSA C22.2 No.1071-01 |
| Grid Connection Compliance | IEEE 1547 |
| Monitoring | Via EMA Software |

*The default AC output is 240V mode. Programmable to 208V mode.

**Programmable per customer and utility requirements. All settings UL approved.

Specifications subject to change without notice - please ensure you are using the most recent version found at APsystems.com

10.25.16 © All Rights Reserved