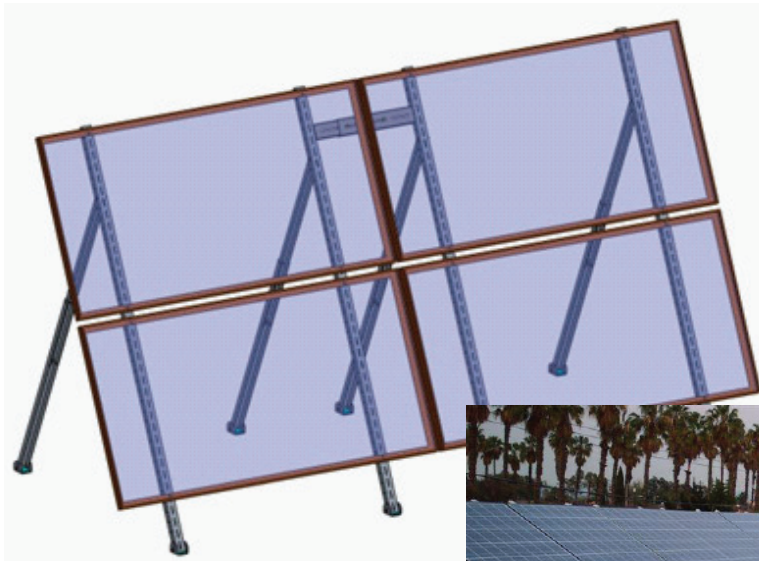




Tamarack Solar  
Products

# ADJUSTABLE GROUND, ROOF & AWNING MOUNTS



Introducing a redesigned, adjustable roof/ground/awning mount with new features including:

- Single tool installation
- Telescoping back leg and stronger pivoting foot, fixed tilt available on larger orders
- Multiple sets can be joined together with a intertie kit to create a single array
- Quantities of panels supported vary by panel model widths, works with smaller 12V and 24V panels, up to large 72c
- No need to source additional pipe, everything beyond the footing is included
- Can be used as an awning structure, flat roof install, or ground mount

Mounts can also accomodate variable ground heights to create a consistant level install due to adjustability in leg length. Great for use in off-grid remote applications, on flat roofed structures such as shipping containers, sheds and awning structures. This mount is a simple and comprehensive solution for small area solar photovoltaic (PV) needs or larger commercial installs. Mounts can also accomodate variable ground heights to create a consistant level install due to variabiliy in leg height. To configure based on your specific pole mounting needs, please use the Tamarack Solar Pole Mount Modeling Spreadsheet available at [www.tamaracksolar.com](http://www.tamaracksolar.com) or contact our customer service team at: 1-800-819-7236, or at [sales@tamaracksolar.com](mailto:sales@tamaracksolar.com).

## Adjustable Ground/Roof/Awning Mounts

| Item #      | Description                    |
|-------------|--------------------------------|
| UNI-GR70CV  | Roof/Ground Mount 70" Channel  |
| UNI-GR90CV  | Roof/Ground Mount 90" Channel  |
| UNI-GR110CV | Roof/Ground Mount 110" Channel |
| UNI-GR125CV | Roof/Ground Mount 125" Channel |
| 51-0520-002 | Ground Mount Intertie Kit      |