

PART NO.

S-5-T

Note:

SF 9"

AF-

FAB-S5T

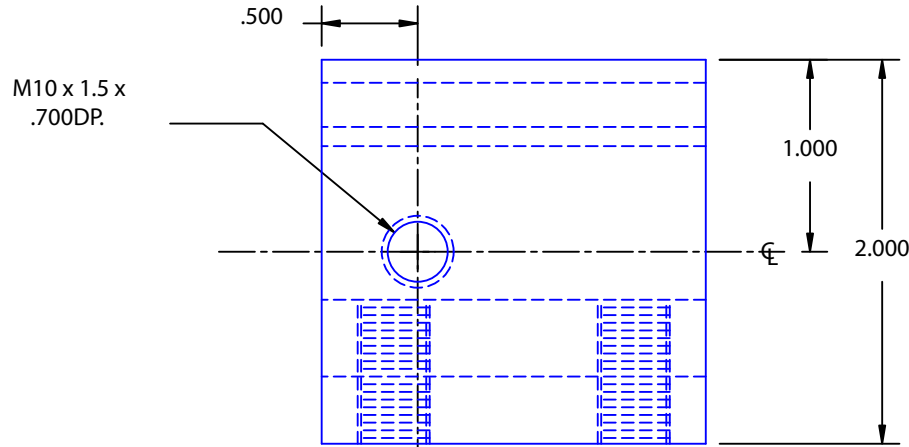
PART NO.: S-5-T, required two parts:

DIE NO.: AF-3809 - S5T, 2"

DIE NO.: AF-3810 - S5T INSERT, 2"

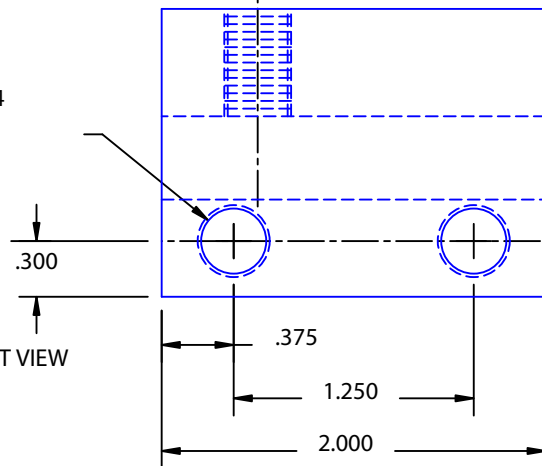
AFCO ITEM CODE: 3809F903

TOP VIEW

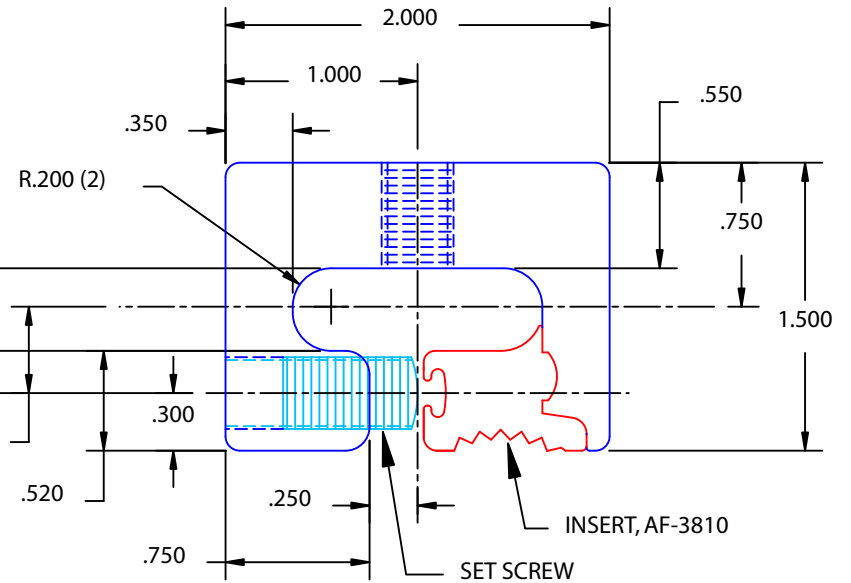


DRILL & TAP 3/8-24
1.000DP TYP. (2)

FRONT VIEW



END VIEW



UNLESS OTHERWISE SPECIFIED, THE FOLLOWING TOLERANCES APPLY FOR DIMENSIONS ARE IN INCHES

1 PLACE DECIMAL: ±.031
2 PLACE DECIMAL: ±.020

3 PLACE DECIMAL: ±.015
ANGULARITY: ±2°

FRACTIONS
±1/32

HOLE DIAMETER TOLERANCES ARE:
.000-.250: ±.004
.251-.500: ±.008
.501 UP: ±.012

REV.	DESCRIPTION & DATE	REV.	DESCRIPTION & DATE
-	REL. FOR PRODUCTION, ECN#100842, DL9/07/05		

- TYPICAL WALL EXCEPT AS SHOWN

- BREAK SHARP CORNERS

CUSTOMER:	METAL ROOF INNOVATIONS
CUST. PART No:	S-5-T (METRIC)
END USE:	ROOF CLAMP

AFCO EXTRUSIONS
P.O. BOX 5085
3333 ROY STREET
ALEXANDRIA, LA. 71307

ALLOY:	6061	TEMPER:	T-6	TYPE DIE:	SOLID
DIE SIZE:		No. OF HOLES:		BACKER:	
BOLSTER:		FEEDER PLT:		BILLET:	
EST. AREA:		EST. PERIMETER:		FACTOR:	
EST. WT/FT:		CIRCUMSCRIBED CIR. DIA:			
FINISH:		RATIO:			

DRAWN BY:	DUCLÉ	DATE:	06/22/05	SCALE:	FULL
-----------	-------	-------	----------	--------	------

