



FLUSH MOUNT RAIL KIT FOUR 84-INCH RAILS

Save Time and Money

Attractive black rail mounting system provides easy installation, simple wire management, and great strength all in a single box



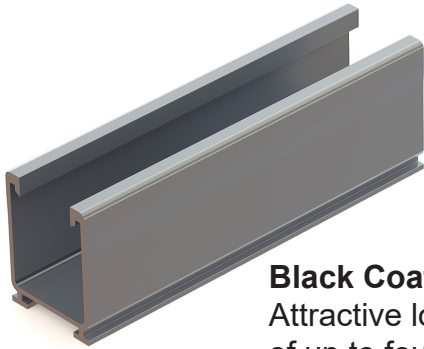
- Kit contains all parts required to mount 4 modules with width of up to 41.5-inches in portrait orientation *
- Two rail heights to choose from, 1.6-inch or 2.3-inch
- Module clamps included in kits fit frame thickness of 30mm to 40mm; additional clamps available for modules with thicker frames,
- UPS shippable

* Total length of a single row of modules is 168-inches. Two rail add-on kits available for mounting modules wider than 41.5 inches.

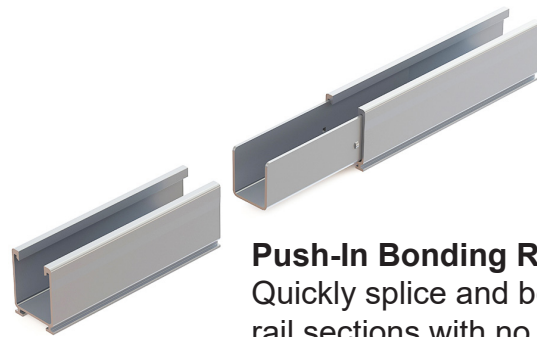
- Best Wire Management** - PV cables and wiring for module-level electronics fits inside rails to avoid time consuming wire management.
- Use Any Roof Attachments - Included L-foot** mount to Tamarack composition shingle flashings, S-5! metal roof clamps or any roof attachment that can be used with a 5/16 inch bolt.
- One Wrench Size** - Install with ease and minimal tools. A 1/2-inch socket fits all fasteners.
- UL 2703 Listed** - All components meet UL standards and have Class A Fire Rating for Type 1 and 2 modules.
- PE Certified** - Pre-stamped engineering letters available for most states.

Tamarack Flush Mount 84-inch Rail Kit

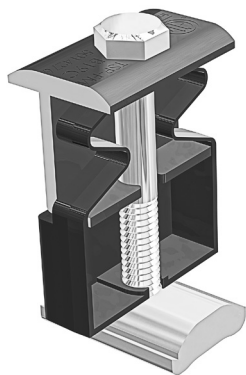
Install Four Typical PV modules



Black Coated Rails
Attractive low-profile mounting of up to four modules with four-foot roof attachment spacing. Certified for up to 180 MPH wind speed and 120 PSF snow load. **4 rails included. Two rail heights available - 1.6-inch or 2.3-inch.**



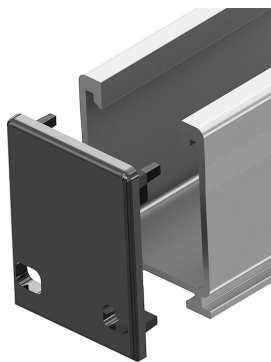
Push-In Bonding Rail Splice
Quickly splice and bond rail sections with no tools or fasteners. Top Clamps and Rail Mounts can be co-located with splice. **4 splices are included.**



5050 Clamp
One clamp can be used as a mid-clamp or an end-clamp on modules with 30 mm to 40 mm frame height. **10 clamps included.**



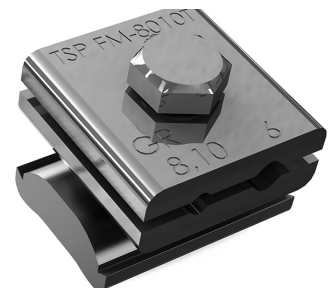
Rail Mount and L-Foot
Quickly and securely mount the rail from either side, to Tamarack composition shingle flashings, S-5! metal roof clamps or any roof attachment that can be used with a 5/16 inch bolt. **8 mounts and L-feet included.**



Push-On End Cap
Cap give the rail system a finished look while allowing drainage. **4 caps included.**

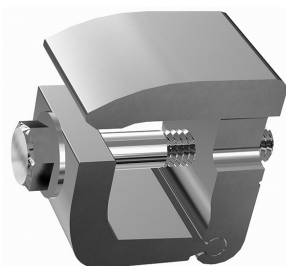


Wire Management Clip
Clips can be pushed into top of rail to keep cables in place. **12 clips included.**



Ground lug
Use one per module row to ground rail with bare 6 to 10 AWG copper wire. **2 Ground Lugs included.**

Channel End Clamp
This end clamp replaces the 50/50 clamp at the end of the row of modules for better aesthetics. It is your choice which part to use. **4 clamps included.**



MLPE Adapter
Use this adapter for mounting microinverters and optimizers on the rails under the modules. Use one adapter for each device. **4 adapters included.**

