



# FLUSH MOUNT RAIL KIT TWO 84-INCH RAILS

2 Rail Add-On Kit for up to 2 Additional Modules

## Save Time and Money

Attractive black rail mounting system provides easy installation, simple wire management, and great strength all in a single box

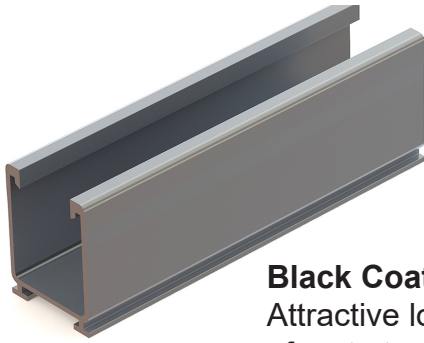


- Kit contains parts required to mount 2 additional modules with widths of up to 41.5-inches in portrait orientation
- Expand our 4 or 8 Rail Kit with an additional 84-inches of rail to accommodate modules wider than 41.5-inches
- UPS shippable

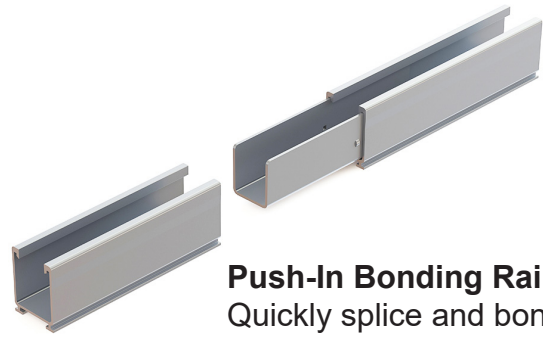
- Best Wire Management** - PV cables and wiring for module-level electronics fits inside rails to avoid time consuming wire management.
- Use Any Roof Attachments - Included L-foot** mount to Tamarack composition shingle flashings, S-5! metal roof clamps or any roof attachment that can be used with a 5/16 inch bolt.
- One Wrench Size** - Install with ease and minimal tools. A 1/2-inch socket fits all fasteners.
- UL 2703 Listed** - All components meet UL standards and have Class A Fire Rating for Type 1 and 2 modules.
- PE Certified** - Pre-stamped engineering letters available for most states.

# Tamarack Flush Mount 84-inch Rail Kit

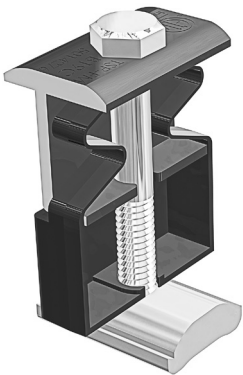
## Install Two Additional PV Modules\*



**Black Coated Rails**  
Attractive low-profile mounting of up to two modules with four-foot roof attachment spacing. Certified for up to 180 MPH wind speed and 120 PSF snow load. **2 rails included. Two rail heights available - 1.6-inch or 2.3-inch.**



**Push-In Bonding Rail Splice**  
Quickly splice and bond rail sections with no tools or fasteners. Top Clamps and Rail Mounts can be co-located with splice. **2 splices included.**



**5050 Clamp**  
One clamp can be used as a mid-clamp or an end-clamp on modules with 30 mm to 40 mm frame height. **4 clamps included.**

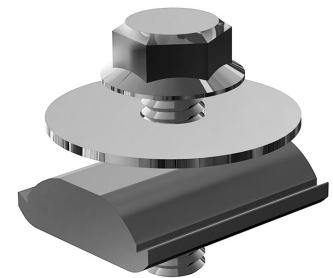


**Rail Mount and L-Foot**  
Quickly and securely mount the rail from either side, to Tamarack composition shingle flashings, S-5! metal roof clamps or any roof attachment that can be used with a 5/16 inch bolt. **4 mounts and L-feet included.**



**Wire Management Clip**  
Clips can be pushed into top of rail to keep cables in place. **3 clips included.**

**MLPE Adapter**  
Use this adapter for mounting microinverters and optimizers on the rails under the modules. Use one adapter for each device. **2 adapters included.**



\* Add 2 additional modules with width of up to 41.5-inches, or add length to a 4 or 8 rail kit to mount modules wider than 41.5 inches.