

SILVANTIS™ F260 MODULE



SunEdison is a recognized authority on silicon technology and manufacturing processes developed through more than 50 years of experience. With our vertically-integrated business model, SunEdison delivers best-in-class solar modules by continuously leveraging new technology and manufacturing techniques that maximize efficiency, minimize cost, and extend product lifetime. Our solar module factory is ISO 14001 certified, and our products undergo rigorous inspection to ensure the highest possible quality.

SunEdison Silvantis solar module family continues our tradition of excellence by delivering the highest levels of performance worldwide. SunEdison is dedicated to providing local, responsive customer service.



HIGH EFFICIENCY

SunEdison modules are designed to the highest industry standards of efficiency.



QUALITY

Manufactured in highly automated, state-of-the-art facilities certified to ISO9001 and ISO14001.



MONO-CRYSTALLINE DESIGN

Mono-crystalline wafers provide high efficiency and consistent high quality.

KEY FEATURES

- Solaiex® CCz p-type mono-crystalline cells for higher conversion efficiency
- Tempered glass with Anti-Reflective Coating (ARC) for higher energy production
- Positive power tolerance provides increased power output
- Withstands loads up to 5400 Pa as tested to IEC standards
- Non-corroding anodized aluminum frame for ruggedness with black anodized aluminum
- Modules with a range of power output available
- All black version with anodized black frame and back sheet

QUALITY & SAFETY

- IEC61215 certified by TÜV SÜD to ensure long-term operation in a variety of climates
- IEC61730 certified by TÜV SÜD to ensure electrical safety
- MCS certified by BABT for the UK (pending)
- Stringent outgoing quality acceptance criteria benchmarked to industry standards
- UL1703 listed by CSA for Canada and US

WARRANTY INFORMATION

- 10-year limited warranty for materials and workmanship
- 25-year linear power warranty with coverage for power loss greater than 3.5% in the first year and 0.7% degradation per year thereafter
- Backed by SunEdison Products Singapore





F260 SOLAR MODULE

PHYSICAL PARAMETERS

Module Dimensions (mm)	1,658 x 990 x 50
Module Weight (kg)	19.3
Cell-Type	Mono-crystalline
Number of Cells	60
Frame Material	Black Anodized Aluminum
Glass (mm)	3.2 Tempered ARC glass

TEMPERATURE COEFFICIENTS AND PARAMETERS*

Nominal Operating Cell Temperature (NOCT) (°C)	48 ± 2 (KyC)
Temperature Coefficient of Pmax (%/°C)	-0.48
Temperature Coefficient of Voc (%/°C)	-0.34
Temperature Coefficient of Isc (%/°C)	+0.05
Maximum System Voltage (V)	600 (UL) & 1000 (IEC)
Limiting Reverse Current (A)	8.40
Maximum Series Fuse Rating (A)	15

Temperature coefficients may vary by ±10%

ELECTRICAL CHARACTERISTICS*

Model #	F260KyC
Tolerance	-0+5 W
Rated Maximum Power Pmax (W)	260
Open-Circuit Voltage Voc (V)	38.4
Short Circuit Current Isc (A)	8.87
Module Efficiency (%)	15.8%
Maximum Power Point Voltage Vmpp (V)	31.0
Maximum Power Point Current Impp (A)	8.40
Frame Color	Black
Back Sheet Color	Black

All electrical data at standard test conditions (STC): 1000W/m², AM1.5, 25°C
Electrical characteristics may vary by ±5% and power by -0/+5W

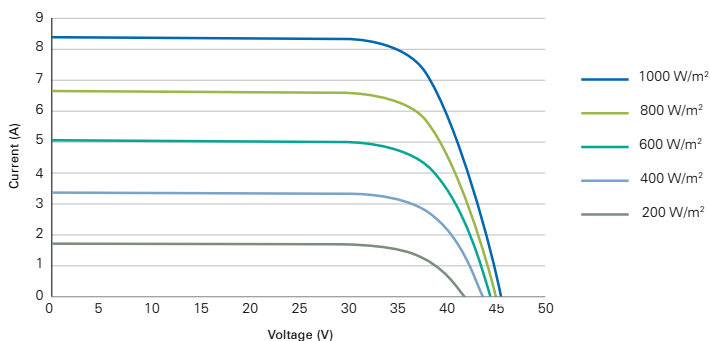
* Listed specifications are subject to change without prior notice.

y indicates manufacturing location:

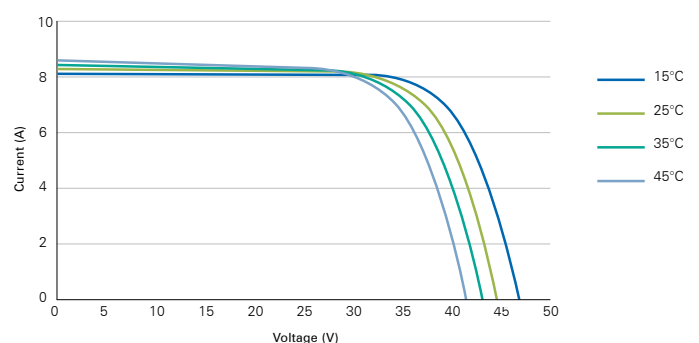
M = Malaysia, C = Canada, D = Europe,

X = Mexico, P = PRC, T = Taiwan

IV CURVES AT MULTIPLE IRRADIANCES* [25°C]



IV CURVES AT MULTIPLE TEMPERATURES* [1000 W/M2]

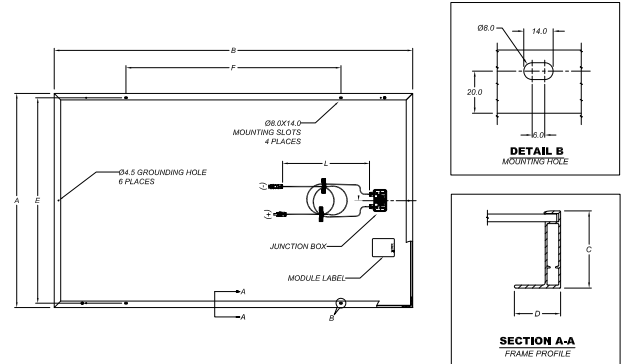


For more information about SunEdison Silvantis Modules, please visit www.SunEdisonSilicon.com

© 2013 SunEdison, Inc. All rights reserved. SunEdison and the SunEdison logo are registered trademarks or trademarks of SunEdison, Inc. and/or its affiliates in the United States and certain other countries. All other trademarks mentioned in this document are the property of their respective owners. The use of the word partner does not imply a partnership relationship between SunEdison, Inc. and any other company.

F260BOB CyC Data Sheet_08 2013

F260 SOLAR MODULE DIMENSIONS mm [inch]



Module Dimensions

A – 990 [39.0]

B – 1,658 [65.3]

C – 50 [2.0]

D – 30 [1.18]

Mounting Hole Spacing

E – 950 [37.4]

F – 994 [39.1]

Cable Length

L – 1,000 [39.4]

