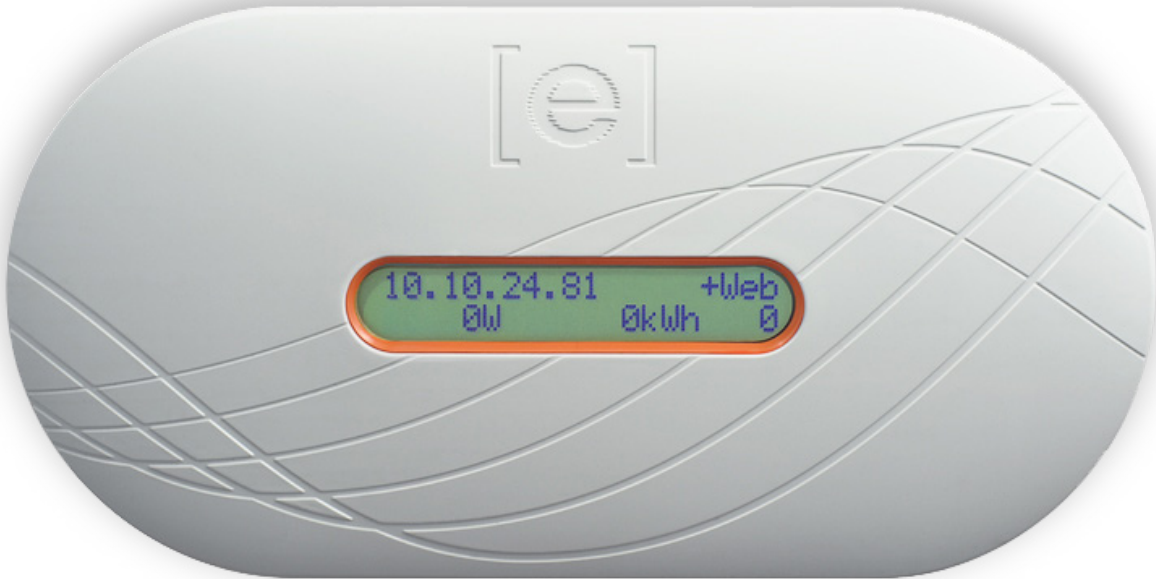


Envoy Communications Gateway™



The Enphase **Envoy® Communications Gateway** provides network access to the solar array enabling comprehensive monitoring and management of an Enphase system.

Solar professionals and system owners can easily check the status of their Enphase System using the Envoy's LCD display or get more detailed performance data via Enlighten® Software, included with purchase of Envoy.

SMART

- Includes web-based monitoring and control
- Integrates with smart energy devices
- Automatically upgrades and sends performance data

SIMPLE

- Plug and play installation
- Flexible network configuration
- No additional AC wiring required

SCALABLE

- Residential or commercial ready out of the box
- Supports up to 600 microinverters

INTERFACE

| | |
|---------------------------|--|
| Power Line Communications | Enphase proprietary |
| Local Area Network (LAN) | 10/100 auto-sensing, auto-negotiating, 802.3 |

LAN CONNECTION OPTIONS

| | |
|--|---|
| Cable Assembly, Ethernet, RJ45, Orange, 10ft | Included with ENV-120-01 and ENV-120-02 |
| Power line communication bridge pair | Included with ENV-120-01 |
| Wireless N USB adapter (802.11b/g/n) | Included with ENV-120-02 |

POWER REQUIREMENTS

| | |
|-------------------|------------------------------------|
| AC supply | 120 VAC, 60 Hz |
| Power consumption | 2.5 watts typical, 7 watts maximum |

CAPACITY

| | |
|---------------------------------|-----------------------|
| Number of microinverters polled | Recommended up to 600 |
|---------------------------------|-----------------------|

MECHANICAL DATA

| | |
|--------------------------------|--|
| Dimensions (WxHxD) | 222.5 mm x 112 mm x 43.2 mm (8.8" x 4.4" x 1.7") |
| Weight | 340 g (12 oz.) |
| Ambient temperature range | -40°C to +65°C (-40° to 149°F) |
| Cooling | Natural convection—no fans |
| Enclosure environmental rating | Indoor NEMA 1 |

FEATURES

| | |
|------------------------|--|
| Standard warranty term | Two years |
| Compliance | UL 60950-1, EN 60950-1, CSA22.2 No. 60950-1 and IEC 60950-1, FCC Part 15 Class B |
| API available | System-level production data |

 **Soligent**
YOUR ENPHASE DISTRIBUTOR
SOLIGENT
800-967-6917
www.soligent.net

To learn more about Enphase Microinverter technology, visit enphase.com

 **enphase**
ENERGY