



KuMax

HIGH EFFICIENCY MONO PERC MODULE

CS3U-365 | 370 | 375 | 380MS

(1000 V / 1500 V)

With Canadian Solar's industry leading mono-PERC cell technology and the innovative LIC (Low Internal Current) module technology, we are now able to offer our global customers high power mono modules up to 380 W.

The KuMax mono-PERC modules with a dimension of 2000 x 992 mm, close to our 72 cell MaxPower modules, have the following unique features:

- **Higher** power classes for equivalent module sizes
- **High** module efficiency up to 19.15 %
- **LOW** hot spot temperature risk
- **LOW** temperature coefficient (Pmax): -0.37 % / °C
- **LOW NMOT** (Nominal Module Operating Temperature): 42 ± 2 °C



More power output thanks to low NMOT: 42 ± 2 °C



Low power loss in cell connection



Safer: lower hot spot temperature



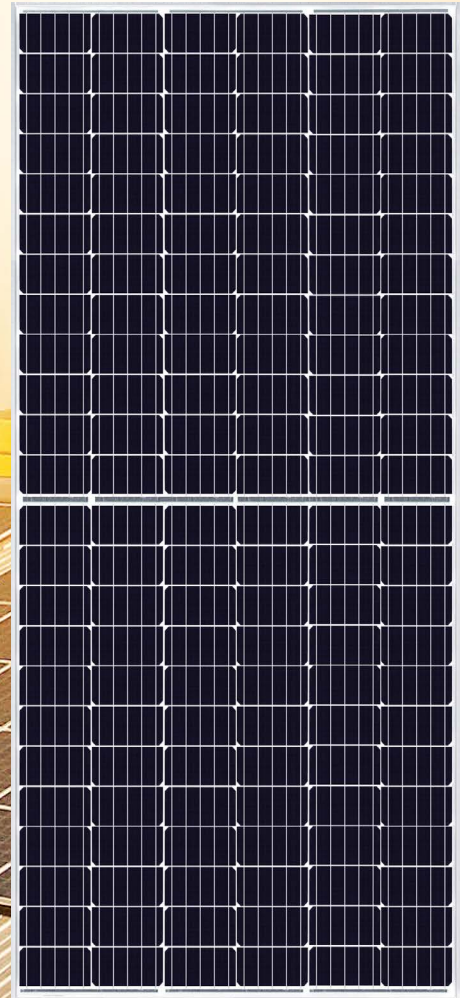
Heavy snow load up to 5400 Pa, wind load up to 2400 Pa



Low BoS cost with 1500 VDC system voltage



High PTC rating of up to: 93.13 %



linear power output warranty



product warranty on materials and workmanship

PRODUCT CERTIFICATES*

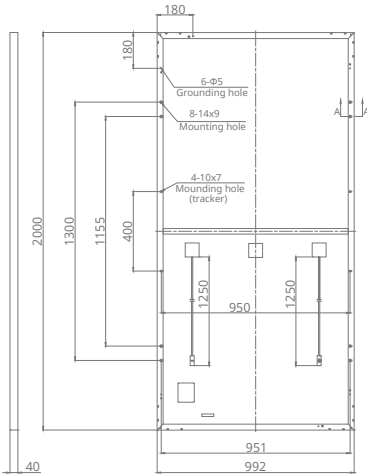
IEC 61215 / IEC 61730: VDE / CE / MCS / CEC AU / CQC
UL 1703 / IEC 61215 performance: CEC listed (US) / FSEC (US Florida)
UL 1703: CSA



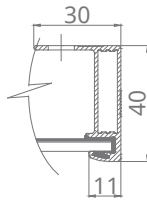
* If you need specific product certificates, and if module installations are to deviate from our guidance specified in our installation manual, please contact your local Canadian Solar sales and technical representatives.

ENGINEERING DRAWING (mm)

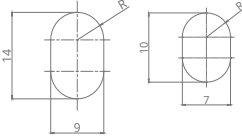
Rear View



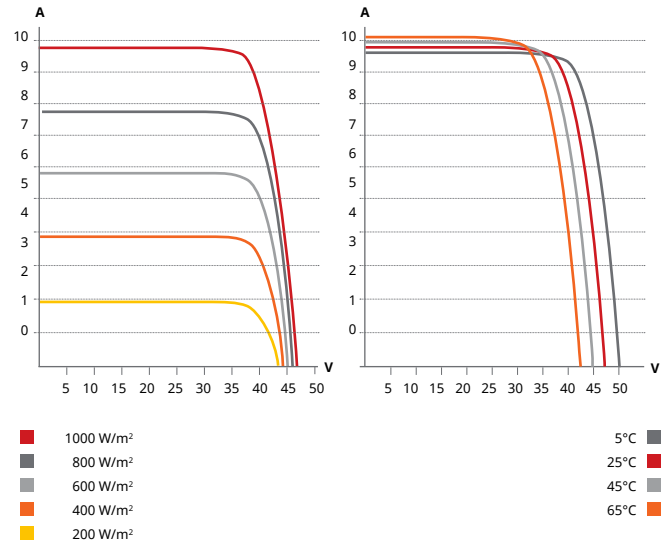
Frame Cross Section A-A



Mounting Hole



CS3U-370MS / I-V CURVES



ELECTRICAL DATA | STC*

CS3U	365MS	370MS	375MS	380MS
Nominal Max. Power (Pmax)	365 W	370 W	375 W	380 W
Opt. Operating Voltage (Vmp)	39.4 V	39.6 V	39.8 V	40.0 V
Opt. Operating Current (Imp)	9.27 A	9.35 A	9.43 A	9.50 A
Open Circuit Voltage (Voc)	47.2 V	47.4 V	47.6 V	47.8 V
Short Circuit Current (Isc)	9.77 A	9.85 A	9.93 A	10.01 A
Module Efficiency	18.40%	18.65%	18.90%	19.15%
Operating Temperature	-40°C ~ +85°C			
Max. System Voltage	1500V (IEC/UL) or 1000V (IEC/UL)			
Module Fire Performance	TYPE 1 (UL 1703) or CLASS C (IEC 61730)			
Max. Series Fuse Rating	30 A			
Application Classification	Class A			
Power Tolerance	0 ~ + 5 W			

* Under Standard Test Conditions (STC) of irradiance of 1000 W/m², spectrum AM 1.5 and cell temperature of 25°C.

ELECTRICAL DATA | NMOT*

CS3U	365MS	370MS	375MS	380MS
Nominal Max. Power (Pmax)	271 W	275 W	279 W	282 W
Opt. Operating Voltage (Vmp)	36.4 V	36.6 V	36.8 V	37.0 V
Opt. Operating Current (Imp)	7.45 A	7.52 A	7.58 A	7.64 A
Open Circuit Voltage (Voc)	44.3 V	44.4 V	44.6 V	44.8 V
Short Circuit Current (Isc)	7.88 A	7.95 A	8.01 A	8.08 A

* Under Nominal Module Operating Temperature (NMOT), irradiance of 800 W/m², spectrum AM 1.5, ambient temperature 20°C, wind speed 1 m/s.

MECHANICAL DATA

Specification	Data
Cell Type	Mono-crystalline, 156.75 X 78.38 mm
Cell Arrangement	144 [2 X (12 X 6)]
Dimensions	2000 X 992 X 40 mm (78.7 X 39.1 X 1.57 in)
Weight	22.6 kg (49.8 lbs)
Front Cover	3.2 mm tempered glass
Frame	Anodized aluminium alloy, crossbar enhanced
J-Box	IP68, 3 diodes
Cable	4 mm ² (IEC), 12 AWG (UL)
Cable Length	1250 mm (49.2 in), 1670 mm (65.7 in) is optional for single tracking system with leap-frog connection
Connector	T4 series
Per Pallet	27 pieces
Per Container (40' HQ)	594 pieces

TEMPREATURE CHARACTERISTICS

Specification	Data
Temperature Coefficient (Pmax)	-0.37 % / °C
Temperature Coefficient (Voc)	-0.29 % / °C
Temperature Coefficient (Isc)	0.05 % / °C
Nominal Module Operating Temperature	42 ± 2°C

PARTNER SECTION



* The specifications and key features contained in this datasheet may deviate slightly from our actual products due to the on-going innovation and product enhancement. Canadian Solar Inc. reserves the right to make necessary adjustment to the information described herein at any time without further notice.

CANADIAN SOLAR INC.

545 Speedvale Avenue West, Guelph, Ontario N1K 1E6, Canada, www.canadiansolar.com, support@canadiansolar.com