

Installs flat out on commercial roofs.

With only two primary components, the IronRidge Ballasted Roof Mount (BRM) System could not be simpler. Steel ballast trays combine with module clamps to form a rail-less system that installs rapidly and adapts easily to roof contours and obstacles.

In addition, the BRM System offers a full range of accessories—from wind deflectors to wire clips—that allow you to optimize systems for engineering loads and total installed cost.



Rugged Construction

Stainless and structural steel components ensure durability.



Simplified Grounding

Internally bonded tray with WEEBs streamlines equipment grounding.



Simple Assembly

Modular system deploys rapidly and adapts to roof features.



Design Software

Online tool generates a complete bill of materials in minutes.



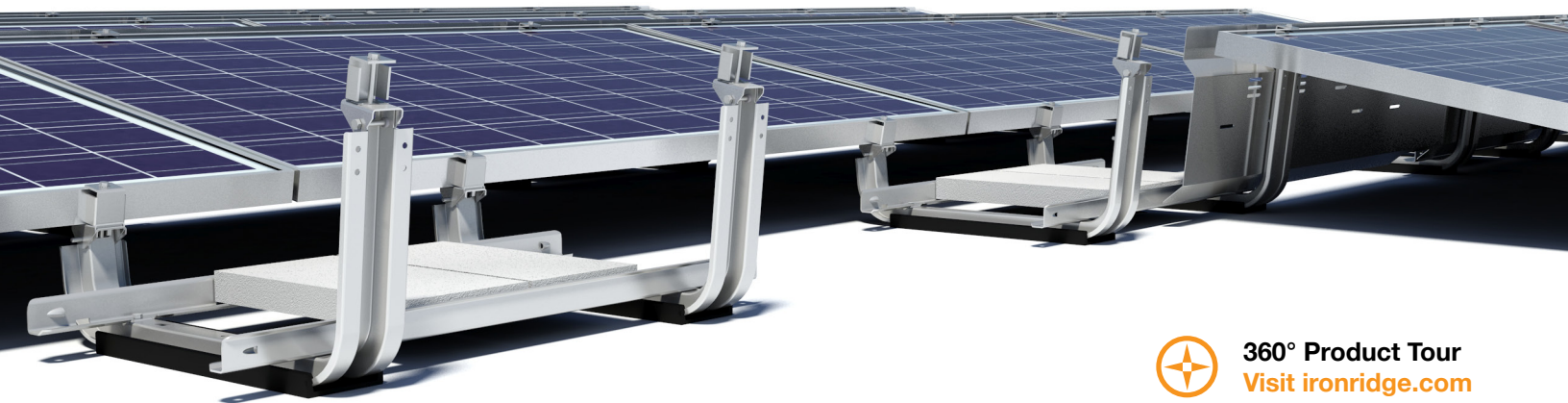
Minimal Loading

Lightweight design and wind deflectors reduce loading as low as 2.8 psf.



20 Year Warranty

Twice the protection offered by competitors.



360° Product Tour
Visit ironridge.com

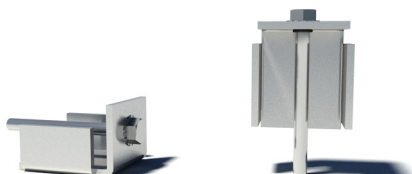
Ballast Tray Components

Ballast Trays



Galvanized steel trays tilt and secure solar modules.

Module Clamps



Pre-assembled clamps fasten and ground modules to trays.

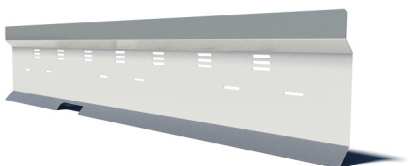
Roof Pads



Optional EPDM pads protect roofing material from damage.

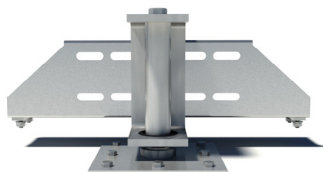
Structural Components

Wind Deflectors



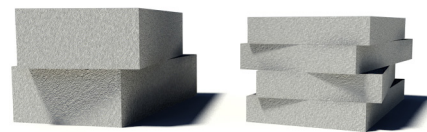
Aluminum deflectors reduce wind uplift and stiffen rows.

Seismic Anchors



Steel anchors prevent lateral motion from seismic shaking.

Ballast Blocks



Locally-sourced blocks reduce cost and freight for ballasting.

Electrical Accessories

Wire Clips



Snap-in cable ties hold wire bundles up to 50 lb.

Microinverter Brackets



Bolt-on brackets support power optimizers and microinverters.

Grounding Lugs



Wiley Grounding Lugs connect the entire row to ground.

Resources



Design Assistant

Go from rough layout to fully engineered system. For free.

Go to ironridge.com/brm



Spacer Tool Included

With every order, IronRidge includes free Spacer Jigs to make it even easier to install perfectly aligned arrays.