



## Lightning-Fast Deployment

- Module attachment clamps install anywhere on the rail
- Module grounding integrated into the panel clamp
- Attaches to most roof standoff systems
- Adjustable rail clamp accommodates for roof variation and installation alignment issues
- Unique splice brackets require NO HOLES in rails

## Maximize Your Project Dollars

- No drilling, cutting, or special tools required
- Fits all major solar modules
- Quickest system to assemble on the market

## Engineered to Last

- Stainless steel and aluminum construction
- Clamps tested to over 1000 lbs pull-force
- ETL Listed to UL2703
- 15-year warranty

## Engineering Support

- Project support from conception to completion
- Full layout and loading analysis for every project
- Online and onsite installation training available



*Quick-Connect  
Clamps with  
Integrated Grounding*



*Fits All  
Modules*



*Five Parts  
to Order*



**Easy to install. Built to last.  
With you all the way.**



## 5 Parts to Order

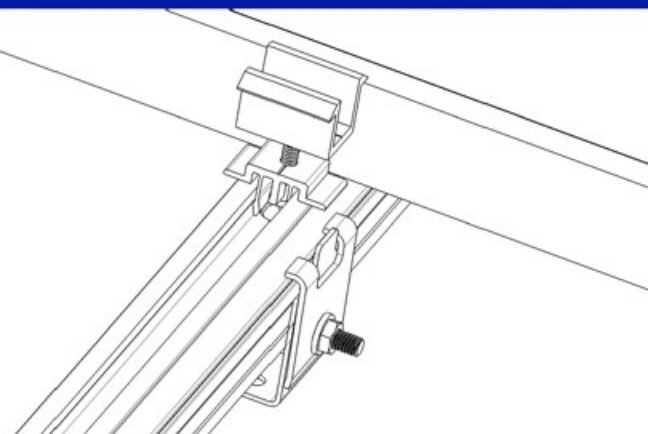
U-Bracket Clamp Assembly



Module Mid Clamp Assembly  
23-51 module thickness



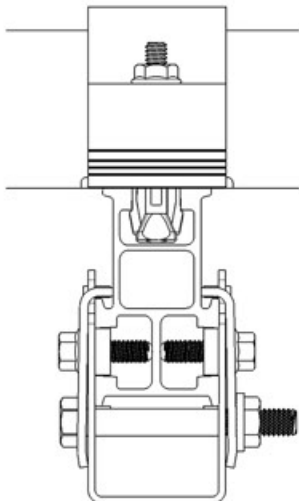
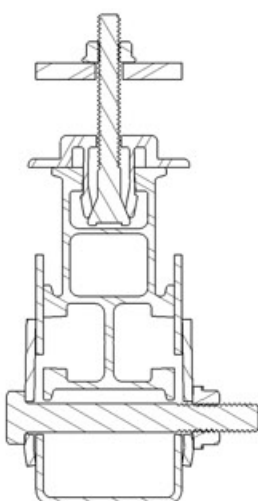
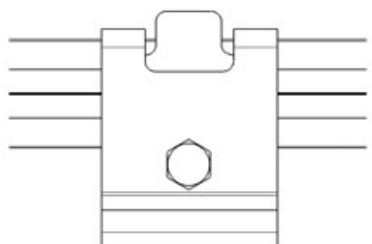
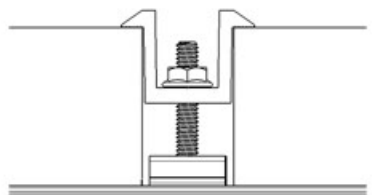
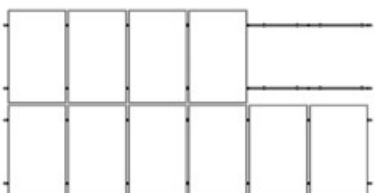
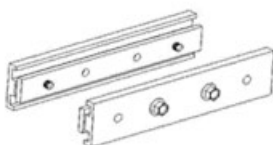
Module End Clamp Assembly  
23-51 module thickness



Support Rail  
1.8" or 2.5" section



Splice Joint Assembly



## Specifications

Clamps tested to over 1000 lbs pull-force

Rails available in mill-finish or clear anodized

Unique splice brackets require NO HOLES in rails

ETL Listed to UL 2703



Pitched Roof



Customizable



PE Approved



Fast Construction



Seismic Considerations



No Special Tools



Made in USA



Ready to Ship