



# Adjustable Tilt Leg Kit

## Installation Guide Addendum

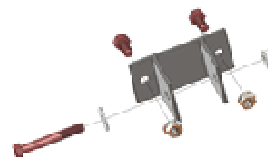
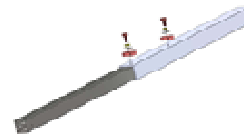
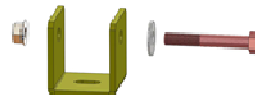
The Adjustable Tilt Leg is a flexible and straightforward roof mounting attachment usable in conjunction with the IronRidge XRS or XRL rail system. Due to its modular design, it can easily be used in any size installation.



### Component List

The component list is indicated here for a single splice kit:

- **U-feet and Hardware** (2 per kit)  
Attaches tilt legs to the roof. A U-foot is necessary for each leg. Each U-foot comes with a 3/8<sup>th</sup> bolt and matching flange nut.
- **Short Leg** (1 per kit)  
A fixed length leg that attaches to the front rail of the array. Comes with 3/8<sup>th</sup> bolt and flange nut.
- **Adjustable Leg Assembly** (1 per kit)  
Adjustable length leg that attaches via the Pivot Bracket to the back rail and provides support for the PV modules.
- **Pivot Bracket** (1 per kit)  
Attaches to the back XR rail via two 3/8<sup>th</sup> bolts. Connects to Adjustable Leg Assembly with single 3/8<sup>th</sup> bolt.



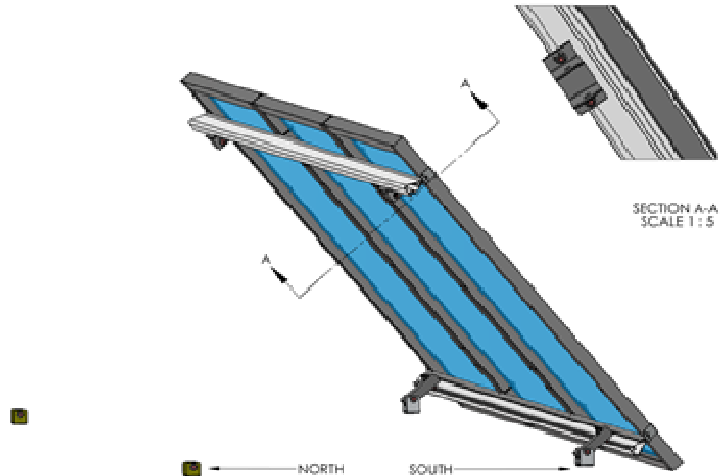
### Tools Required

The following tools are required to install the Adjustable Tilt Leg Kit

- 3/8 socket, or wrench
- Tape measure

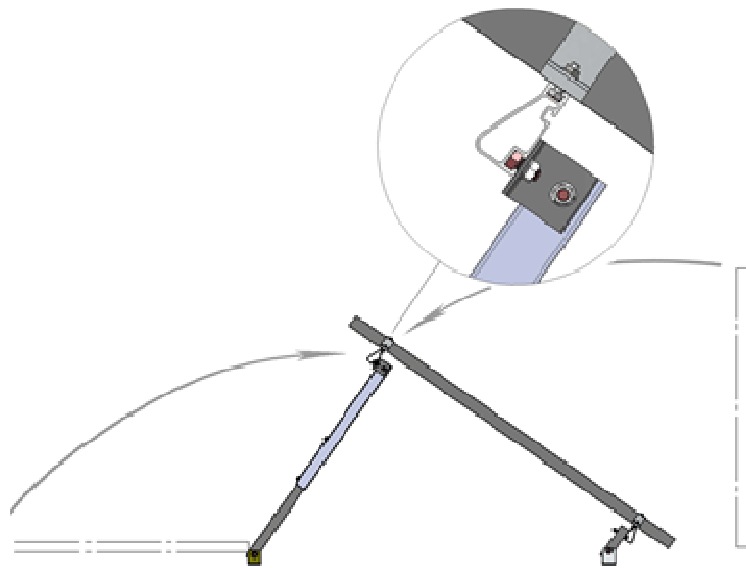
## Installation Instructions

- 1) Mount all of the U-feet to the roof or ground in the desired locations. Attach the Short Leg to the front XR rail in your XR assembly (created according to the XR Rail System Installation Guide) using the normal method of inserting bolts into the 3/8th channel per the guide.
- 2) Attach the Pivot Bracket to the north rail of the XR assembly in each approximate position where the Adjustable Leg Assembly will connect. Allow module row to rest on roof surface.



**Note:** Determine the maximum distance between U-feet according to engineering specifications.

- 3) Adjust the lengths of the Adjustable Leg Assembly to roughly match the required length for your installation parameters.
- 4) Attach the Adjustable Leg Assembly to the north (back) U-foot with 3/8th bolt and flange nut. Hand tighten.
- 5) Tilt the row of modules off of the roof surface and hold at the desired installation angle. Swing the Adjustable Leg Assembly to meet the module row, attaching with a single 3/8th bolt to the Pivot Bracket as shown on left. Repeat until all tilt legs are attached.
- 6) Adjust all attachments as required, and tighten all 3/8th hardware to 180in-lbs.



For Warranty information please refer to the XR Rail System Installation Guide that this addendum is amending.



YOUR IRONRIDGE DISTRIBUTOR  
SOLIGENT  
800-967-6917  
www.soligent.net